

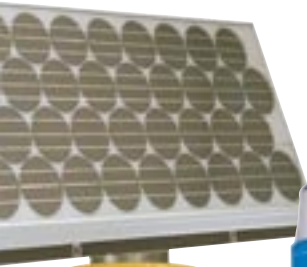
Product Overview



Code Blue

help at the touch of a button™

Code Blue units are seen at university and college campuses, hospitals, corporate campuses, cities and municipalities, transit stops, parking facilities, parks and recreation areas, airports and shopping centers. The **Code Blue** presence provides students, employees, customers and residents a greater sense of security and a greater peace of mind.



Exclusive Hands-Free Code



with proprietary **InterAct3 100™** phone

FP1 standard faceplate with single red *Push for Help* button

CB 1-w

- ◆ Self contained solar/cellular design
- ◆ IPM™ (Intelligent Power Management) optimizes power usage
- ◆ Universal design
- ◆ LED lighted faceplate

CB 1-d

- ◆ 120v AC power standard, optional transformer voltages
- ◆ 70w area light with Blue Beacon
- ◆ High powered strobe
- ◆ LED lighted faceplate
- ◆ Passive vent
- ◆ Second opening on CB 1-d for directory or custom plate

CB 1-s

CB 1-e

- ◆ 24v AC power standard, optional transformer voltages
- ◆ Combination Blue Beacon/Strobe
- ◆ LED lighted faceplate
- ◆ Entela certified to UL 60950-1, CSA C22.2 No. 60950-1-3

CB 9-d

- ◆ 24v AC power standard, optional transformer voltages
- ◆ LED lighted faceplate
- ◆ Second opening on CB 9-d for directory or custom plate
- ◆ Entela certified to UL 60950-1, CSA C22.2 No. 60950-1-3

CB 9-s

CB 2-s

- ◆ 120v AC power standard, optional transformer voltages
- ◆ 50w area light with Blue Beacon
- ◆ High powered strobe
- ◆ LED lighted faceplate

Code Blue is the industry leader, with the most products and features—all distinguished by a reputation for the highest quality in vandal-resistant, ADA compliant equipment. **Code Blue** should always be a part of your *people helping people* solution. The perception of safety is as important as the reality, making our highly visible, high profile units an integral part of any proactive security and assistance system.

Code Blue 3100



FP2

optional faceplate with additional black *Info* button



FP2-K

optional faceplate with additional *Call* button and keypad

NOTE: All units shown are available with the FP1, FP2, or FP2-K faceplate.

Circle-of-Safety Pendant System



Available on CB 1 and CB 2 Series



CB 2-e

- ◆ 24v AC power standard, optional transformer voltages
- ◆ Combination Blue Beacon/ Strobe
- ◆ Brushed or painted finish
- ◆ Entela certified to UL 60950-1, CSA C22.2 No. 60950-1-3



CB 8

- ◆ 24v AC power standard, optional transformer voltages
- ◆ LED lighted faceplate
- ◆ Optional remote combination Blue Beacon/Strobe
- ◆ Optional pole mount installation
- ◆ Entela certified to UL 60950-1, CSA C22.2 No. 60950-1-3



CB 4-d CB 4-r CB 4-s

- ◆ 24v AC power standard, optional transformer voltages
- ◆ Optional remote combination Blue Beacon/Strobe
- ◆ Optional pole mount installation
- ◆ Second opening on CB 4-d for directory or custom plate
- ◆ LED lighted faceplate on model CB 4-r
- ◆ Entela certified to UL 60950-1, CSA C22.2 No. 60950-1-3



CB 5-p

- ◆ 24v AC power standard, optional transformer voltages
- ◆ Combination Blue Beacon/Strobe
- ◆ LED lighted faceplate
- ◆ CB 5-p is reduced in height for parking garage installations.
- ◆ CB 3 with decorative housing for Combination Blue Beacon/Strobe



CB 5-s

- ◆ 24v AC power standard, optional transformer voltages
- ◆ Combination Blue Beacon/Strobe
- ◆ LED lighted faceplate
- ◆ CB 5-p is reduced in height for parking garage installations.
- ◆ CB 3 with decorative housing for Combination Blue Beacon/Strobe



CB 3

- ◆ 24v AC power standard, optional transformer voltages
- ◆ Combination Blue Beacon/Strobe
- ◆ LED lighted faceplate
- ◆ CB 5-p is reduced in height for parking garage installations.
- ◆ CB 3 with decorative housing for Combination Blue Beacon/Strobe
- ◆ Entela certified to UL 60950-1, CSA C22.2 No. 60950-1-3

Product Features

Construction

- Proprietary round ¼ inch steel pedestal units
- Heavy 1/8 inch steel or 12 gauge stainless steel wall-mount housings
- Internal anchor mounting
- Stainless steel faceplates
- Vandal resistant stainless steel hardware
- UV resistant Lexan™ lenses
- ADA compliant
- Industrial grade reflective graphics

Communication

- Hands free Code Blue InterAct3100™ standard on all units
- Three interchangeable faceplate choices, single button, dual button & dual button with keypad
- Three auxiliary inputs
- Two auxiliary outputs
- Phone line surge suppressor
- Analog telephone connection
- 16 hr. talk and 32 hr. standby power
- POTS, PBX, cellular & RF compatible
- Compatible with the following monitoring stations: 4+1 Express and 4+2 Express formats
- Can be integrated with on site security systems

Power

- Line Power, 24v AC - 600v AC
- NightCharge™, 120v AC - 600v AC
- Solar

Lighting

- Integral & remote mount capabilities
- Area lighting, High Pressure Sodium or Metal Halide
- High powered strobe
- Combination Blue Beacon/Strobe
- Long life LED face plate lighting

Finish

- Multi-coat polyurethane finish
- Brushed stainless steel
- Ultra weather and UV resistant finish
- Highly graffiti resistant



Overhead Camera Mount

Allows overhead camera mount to be fully integrated with CB 1 bollard. (camera by others)



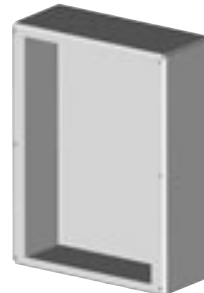
Remote Mount Combination Blue Beacon/Strobe

Provides a highly visual constant blue beacon and a powerful activated strobe for rapid recognition of the unit location.



FME - Flush Mount Enclosure

For flush wall mounting the CB3100 emergency phones.



Power Options

NightCharge™ Option

Operates from a switched power supply such as a lighting grid that is only on at night.

During the day, NightCharge™ provides battery power to operate the unit.

At night, NightCharge™ supplies power to the unit and recharges the batteries.



Solar Power Option

Solar Power available on the CB 1-w and as a remote mount option with the CB 8.



Optional Equipment

Second Opening Options



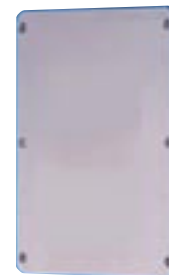
Directory Assembly for Second Opening

Stainless steel face frame, a clear polycarbonate directory lens and a directory backer.



Camera Enclosure Assembly for Second Opening

Standard camera enclosure housing assembly on a stainless steel faceplate with McGard security screws.



Custom Plate Assembly for Second Opening

Customer specified custom stainless steel plate assembly for the second opening in the faceplate.

Note: The second opening options are available on **CB 1-d**, **CB 4-d**, and **CB 9-d**.

Communications Options

RF Options

The RF option is available on the CB 1-s, CB 1-d and the CB 8.



Cellular Options

3 watt analog cellular transceiver is standard on the CB 1-w (solar/wireless) and optional on the CB 1-s, CB 1-d, and the CB 8.



RPD — Remote Programming & Diagnostics

The Code Blue RPD software provides **remote programming** capabilities for multiple phones through efficient use of templates. The programming supervisor can simply establish the programming rules for each or multiple phones, save this information to a template provided in the software and apply the chosen template to any new or existing Code Blue phone (CB3100 and CB3000 models).

The **diagnostic** feature allows for testing on demand or to a pre-set schedule chosen by the supervisor. Historical testing records and programming records can be retained and searched or sorted by unit ID, date range or event type, and can also be printed or archived.

RPD is available in two formats:

- 1) Software with drivers and PCI card. (minimum PC requirements are: Pentium® processor, 128MB RAM, Windows® 2000 or XP OS, full-size PCI slot)
- 2) PC- keyboard and mouse with software, drivers and card installed. (The supplied computer is a name brand PC with minimum: Pentium® 4/2.4GHz, 256MB RAM, Windows® XP)

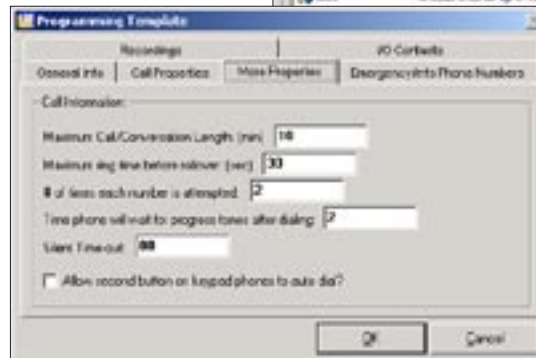
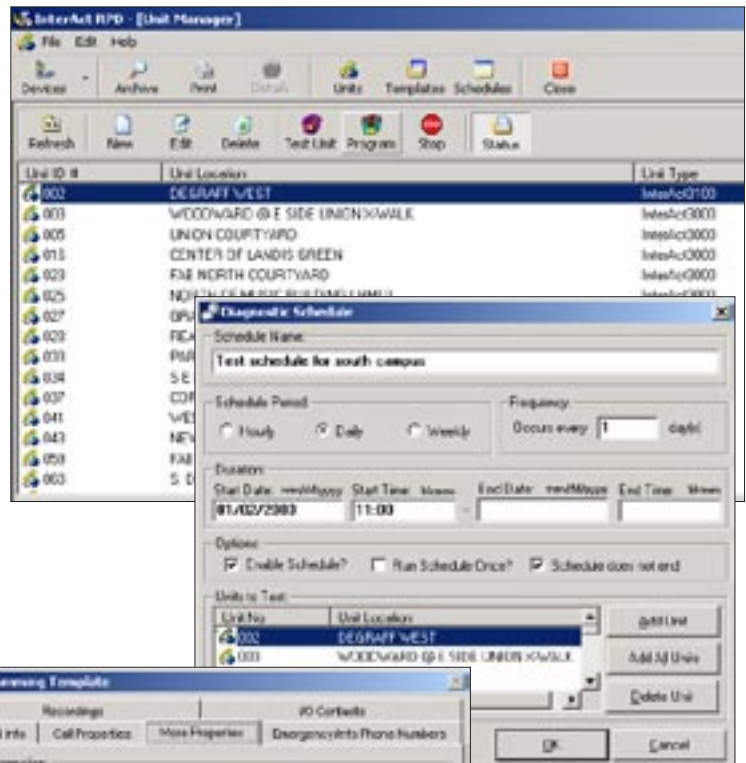
An optional flat screen monitor is also available. Database setup is also available from Code Blue for a "Plug and Play" solution.

Remote Programming Features

All Code Blue phone programming can be performed remotely by RPD. For security reasons, changing the phone's passwords must be done manually.

Diagnostic Features

- ◆ Verifies phone line integrity
- ◆ Verifies phone's ability to receive a call
- ◆ Verifies phone's ability to place a call
- ◆ Reports a phone power failure
- ◆ Speaker and microphone integrity (InterAct3100 firmware 46 or higher only)
NOTE: Test reliability may be impacted by installation environment.



CMS — Call Management System

The Code Blue CMS software provides full incident activity documentation through recorded audio (voice) transmission, unit recognition, call definition (emergency, info, auxiliary input or loss of power) and an automatically archived database. Able to monitor up to three concurrent incoming lines.

Special features of CMS include the ability to attach supplemental notes to a specific activity thus creating a "note trail" to the original call, strobe control operation (on, off or extend operation beyond call termination) and the ability to simultaneously open an associated file upon call activation.

CMS software allows for front end integration for a total system solution.



System Features

- ◆ Records audio transmission to hard drive
- ◆ Controls strobe operation
- ◆ Sends encoded message in ASCII format to facilitate system integration
- ◆ Incoming or in progress calls are maintained even if the computer fails
- ◆ Allows remote microphone gain and speaker volume adjustment
- ◆ Integrates site location map
- ◆ Attach supplemental notes to specific call (note trail)
- ◆ Call activation can open an associated file (example-browser activation for live video or other file user options)
- ◆ Allows phone to report a power loss condition. (Note: this feature is not available on NightCharge™ or Solar applications)

Code Blue's proactive security products provide the most options and the latest technology in communications and power.

Communication Technologies

CB3100 Speakerphone

The CB3100, standard on all **Code Blue** units, is the most advanced speakerphone on the market today. Fully functional in all hard-wired and wireless applications, it seamlessly integrates into any PBX or POTS environment. The detachable and interchangeable stainless steel faceplate is available in single button, dual button and keypad configurations. With "push-to-operate" buttons, two indicator lights and Braille instructions, the CB3100 is ADA compliant.

Cellular Wireless

Code Blue offers a cellular interface to the CB3100 speakerphone for those areas where phone lines are not available. The transceiver will operate in any location that is served by analog cellular service. Check with your cellular providers for service coverage. This powerful 3 watt cellular transceiver is standard on the CB 1-w (solar) and optional on the CB 1-s, CB 1-d and CB 8.

Digital RF Wireless

Code Blue's Digital Spread Spectrum RF option is available on the CB 1-s, CB 1-d and CB 8. Using the 2.4Ghz spectrum, **Code Blue's** RF requires no licensing. It seamlessly integrates into any PBX system while still providing all of the advanced features of the CB3100 Speakerphone.

Power Technologies

24v AC Line Power

All **Code Blue** units (without HID area lights), now use 24v AC power. This breakthrough lowers installation and operational costs, extends the life of components and is safer to operate. With the optional transformers, **Code Blue** can supply product for any voltage worldwide.

NightCharge™

The NightCharge™ option operates from the switched power supply and is available on CB 1 and CB 8 units. This option allows **Code Blue** units to be powered from a 600v AC, 480v AC, 277v AC, 240v AC, 208v AC or 120v AC switched power network. Such networks are commonly used to supply power to outdoor lighting equipment only at night. During the day, NightCharge™ provides battery power to operate the unit. At night, Night Charge™ supplies power to the unit and recharges the batteries. Combined with a **Code Blue** wireless option, a completely trenchless solution is now available.

Solar Power

The CB 1-w and CB 8 solar/cellular units are made to **Code Blue's** exacting standards of weather and vandal resistance, and are fully self-contained, requiring no trenching for power or telephone lines. Intelligent Power Management™, or IPM™, monitors the available solar energy and adjusts the system to provide optimal emergency response. In addition, all of the features of the CB3100 Speakerphone are available.

For more information on the **Code Blue** product line, visit us on the web @

www.codeblue.com

call us at 1-800-205-7186 or e-mail us at info@codeblue.com

Standard Color Selections

Standard colors shown are an approximation of the actual colors.

1688 custom colors from RAL number or sample are also available as a special order.



Safety Blue



Safety Red



Safety Yellow



Midnight Blue



Gloss White



Gloss Black



Medium Bronze



Dark Bronze



Cardinal Red



British Racing Green

Code Blue Unit Specifications

CB 1-e CB 1-s CB 1-d CB 1-w CB 2-s CB 2-e CB 3 CB 4-r CB 4-s CB 4-d CB 5-s CB 5-p CB 8 CB 9-s CB 9-d

| | CB 1-e | CB 1-s | CB 1-d | CB 1-w | CB 2-s | CB 2-e | CB 3 | CB 4-r | CB 4-s | CB 4-d | CB 5-s | CB 5-p | CB 8 | CB 9-s | CB 9-d |
|------------------------|------------|------------|------------|-----------------|-------------|-------------|------------|-------------|-------------|-------------|------------|------------|-------------|------------|------------|
| Height | 9' | 9' | 9' | 8'6" to bollard | 3'6" | 2'8-1/4" | 12' | 1'3-1/4" | 1'1-3/8" | 2'1-3/4" | 9'5-1/2" | 7' | 2'1-3/4" | 5' | 6' |
| Width or Diameter | 12-3/4" | 12-3/4" | 12-3/4" | 12-3/4" | 12" | 12-1/8" | 8-3/4" | 10-1/4" | 10-1/4" | 10-1/4" | 8-3/4" | 8-3/4" | 14" | 12-3/4" | 12-3/4" |
| Depth | - | - | - | - | 8-11/16" | 7-9/16" | - | 6" | 6" | 6" | - | - | 12-11/16" | - | - |
| Material and Thickness | .25" steel | .25" steel | .25" steel | .25" steel | .105" s.s.* | .105" s.s.* | .25" steel | .125" steel | .125" steel | .125" steel | .25" steel | .25" steel | .125" steel | .25" steel | .25" steel |
| Weight | 320 lbs. | 330 lbs. | 330 lbs. | 400 lbs. | 100 lbs. | 65 lbs. | 260 lbs. | 35 lbs. | 30 lbs. | 40 lbs. | 220 lbs. | 175 lbs. | 80 lbs. | 190 lbs. | 215 lbs. |
| Power Reg. (Standard) | 24v AC | 120v AC | 120v AC | solar | 120v AC | 24v AC | 24v AC | 24v AC | 24v AC | 24v AC | 24v AC | 24v AC | 24v AC | 24v AC | 24v AC |

*stainless steel

All dimensions are approximate, refer to unit specs for the actual dimension.

Unit specifications may change without notice.